



Bulford Road, Tidworth

An attractive end of terrace Grade II Listed thatched cottage, with three bedrooms, a substantial rear garden and ample off road parking. Located in the heart of Tidworth.





Originally two Grade II listed thatched cottages, that have been tastefully combined to create an attractive three bedroom end of terrace cottage. The home amounts to 1,159 sq ft of accommodation arranged over two floors, with many character features throughout including wooden beams and cottage doors.

On the ground floor of the home are two well-arranged reception rooms, currently used as the sitting room and dining room, both of which still have functional front doors from prior to when the home was converted. There's also a modern and well equipped kitchen, utility room, the family bathroom and a ground floor bedroom. On the first floor are two perfectly proportioned double bedrooms, each accessible by separate staircases and spacious landings, which ideally lend themselves to be used as a study or snug.

Externally there's a substantial private rear garden, predominantly laid to lawn and planted with mature trees and shrub borders. The space is well-utilised with several outbuildings amounting to a further 557 sq ft, including a summerhouse with electrics, workshop, home gym and store. To the front of the home is a front lawn and a paved driveway with space for up to three vehicles.



Hampshire Cross

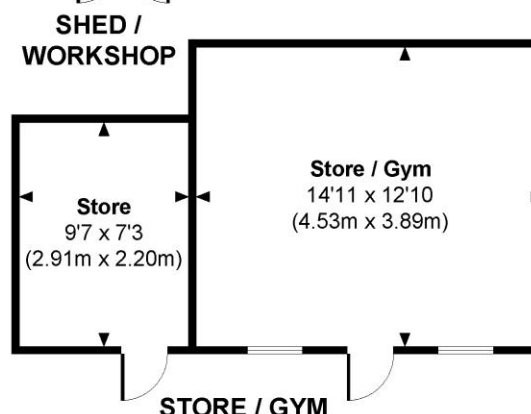
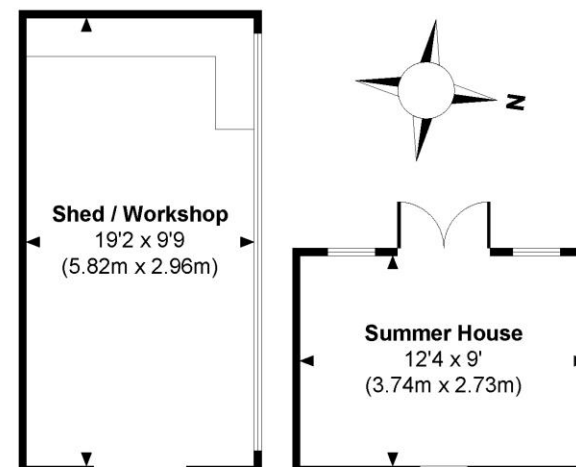
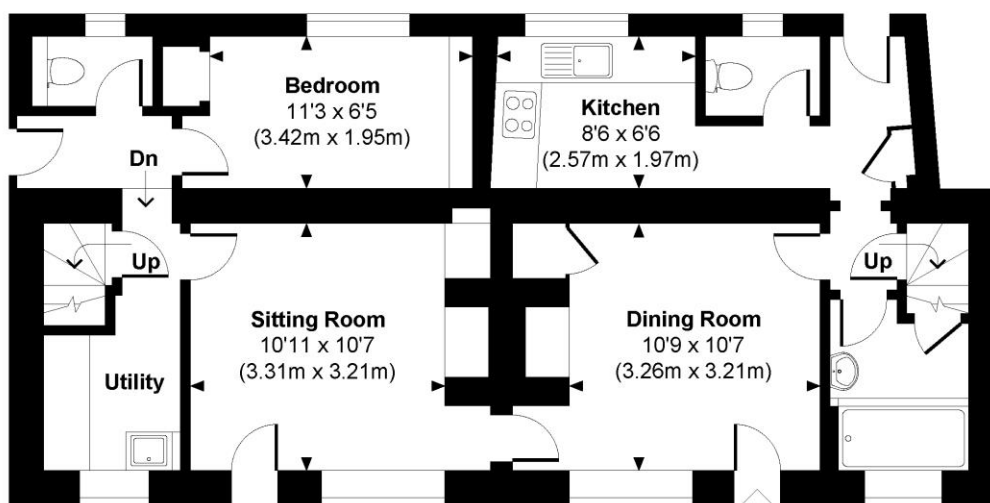
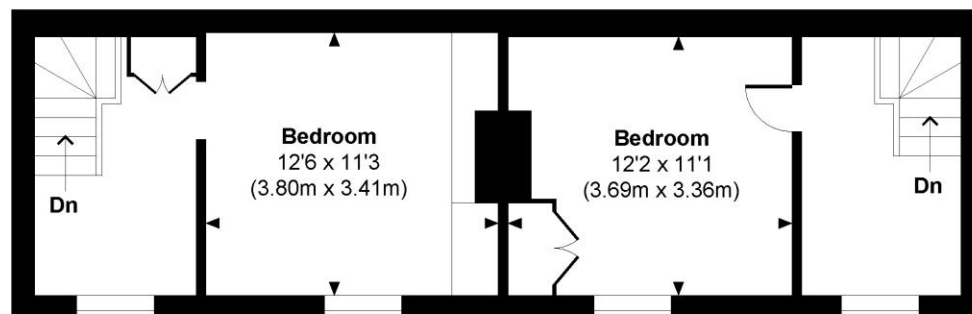
Approximate Gross Internal Area

Main House = 1159 Sq Ft / 107.64 Sq M Store / Gym = 262 Sq Ft / 24.31 Sq M

Shed / Workshop = 185 Sq Ft / 17.23 Sq M Summer House = 110 Sq Ft / 10.21 Sq M

Total = 1716 Sq Ft / 159.39 Sq M

Outbuildings are not shown in correct orientation or location.



© www.propertyfocus.co | Professional Property Photography & Floorplans

49 High Street Salisbury Wiltshire SP1 2PD

01722 337575

www.myddeltonmajor.co.uk

Myddelton & Major for themselves and for the vendors or lessors of this property whose agents they are give notice that: — i) the particulars are set out as a general outline only for the guidance of intended purchasers or lessees, and do not constitute part of an offer or contract. ii) all descriptions, dimensions, reference to condition and necessary permissions for use and occupation, and other details are given without responsibility and any intending purchasers or tenants should not rely on them as statements or representations of fact, but must satisfy themselves by inspection or otherwise as to the correctness of each of them. iii) no person in the employment of Myddelton & Major has any authority to make or give any representation or warranty whatever in relation to this property.

OnTheMarket.com

